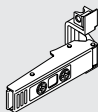


AVENTOS HF

Narrow aluminum hardware set

Package contents

A Top door hinge



D Bottom door mounting plate



E Telescopic arm mounting plate



C Bottom door hinge

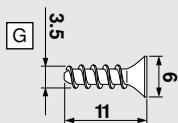


B Top door mounting plate

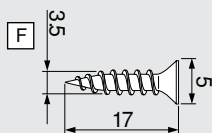


Contents:

- A** 2 x 72T550A top door hinge
- B** 2 x 175H5100.05 top mounting plate
- C** 2 x 78Z550AT bottom door hinge
- D** 2 x 175H5A00 bottom door mounting plate
- E** 2 x 175H5B00 telescopic arm plate
- F** 4 x 629.170 wood screw for 175H5100.05
- G** 16 x 699.110 aluminum door screw



Aluminum screws



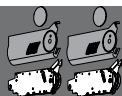
Wood screws

Part no.

Hardware set

78Z550ATA3

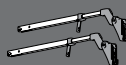
Also required (sold separately)



Lift mechanism set

Set includes:

- 2 x Lift mechanisms
- 2 x Cover plates (right and left)
- 2 x Cover caps
- 10 x #7x35mm (1-3/8") wood screws

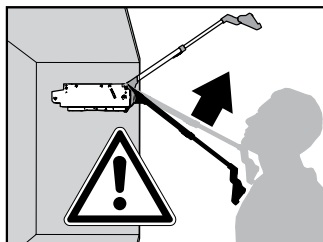


Telescopic arm set

Set includes:

- 2 x Telescopic arms

Assembly

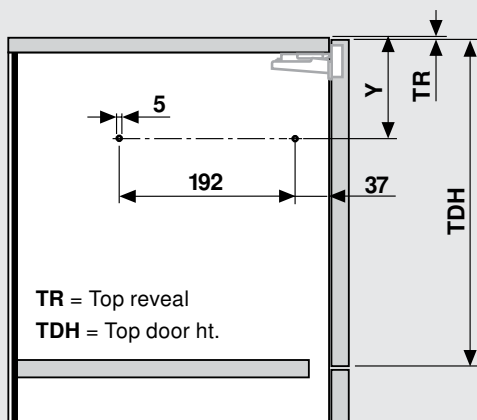


WARNING

Risk of injury from spring-loaded arm

- Do not push lever arm down or leave in the down position
- Remove mechanism before installing or removing cabinet

1 Locating pin locations



Top door height (TDH)	Y
231 to 271	$TDH \times .6 - 28 + TR$
272 to 531	$TDH \times .6 - 57 + TR$

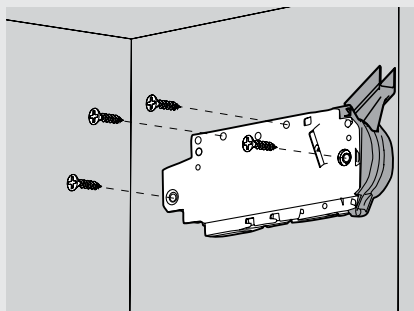
AVENTOS boring template available for preboring 5mm locating pins

Part no.

65.5020

2 Attach the lift mechanism

- Use the AVENTOS template to prebore the locating pin holes for the AVENTOS HF lift mechanism.
- After aligning the lift mechanism with the cabinet using the locator pins, attach the mechanism with the four mounting screws provided.



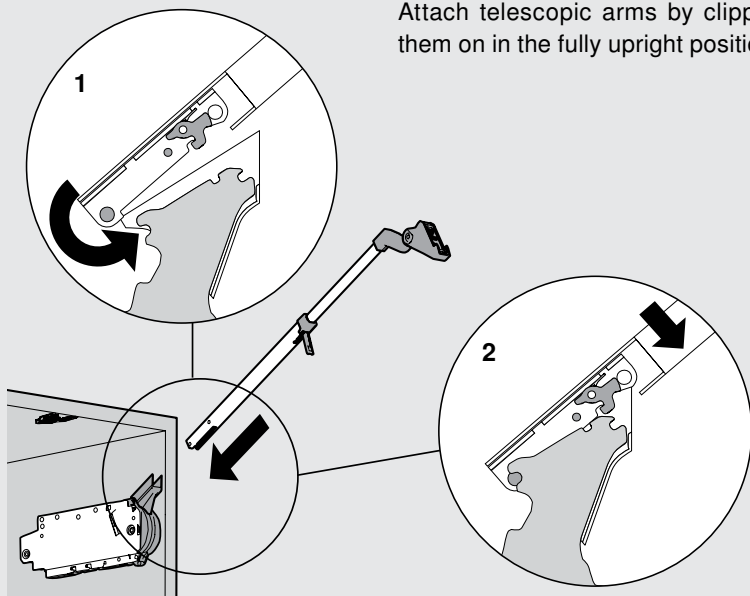
4 x wood screws #7 x 35mm (1-3/8")

3 Attach the telescopic arms



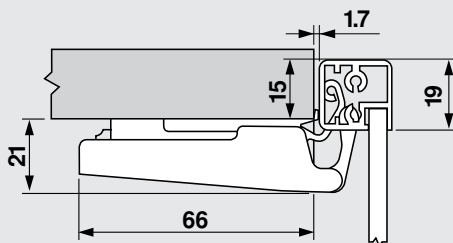
WARNING: Risk of injury from spring loaded arm.

Attach telescopic arms by clipping them on in the fully upright position.



Assembly

5 Top door hinge planning

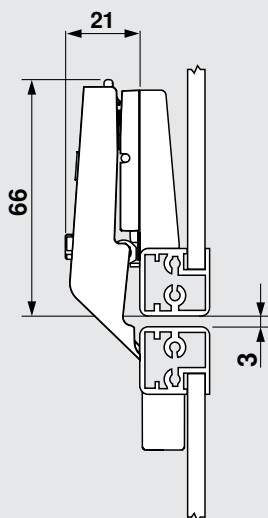


Aluminum door hinge
In-line mounting plate

Part no.

72T550A
175H5100.05

6 Bottom door hinge planning

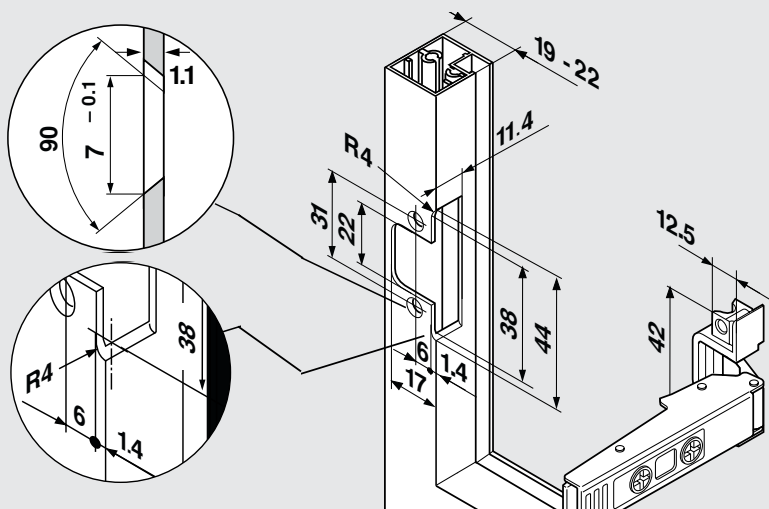


Aluminum door bottom hinge
Bottom door mounting plate

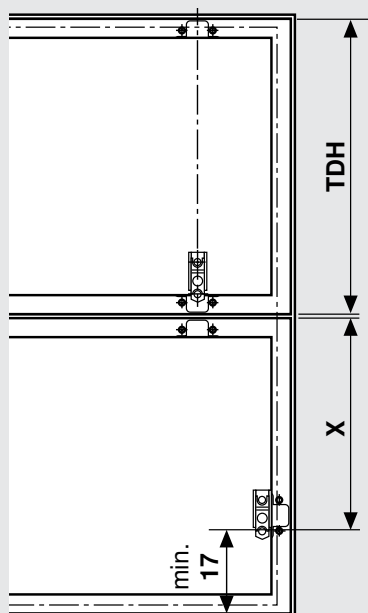
Part no.

78Z550AT
175H5A00

7 Frame preparation



8 Bottom door planning



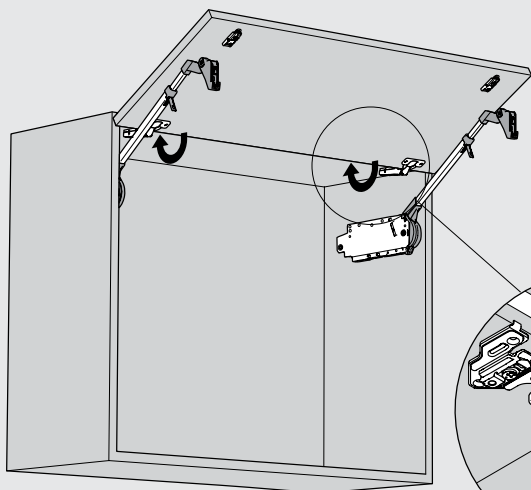
Top door height (TDH)	X
231 to 271	TDH x .5 + 70
272 to 531	TDH x .5 + 47

NOTE: 3 hinges are required for cabinet width over 1219 mm (48") or 26.5 lb. combined door weight

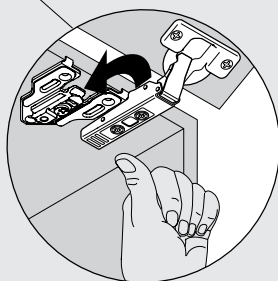
Part no.
Telescopic arm mounting plate **175H5B00**

Assembly

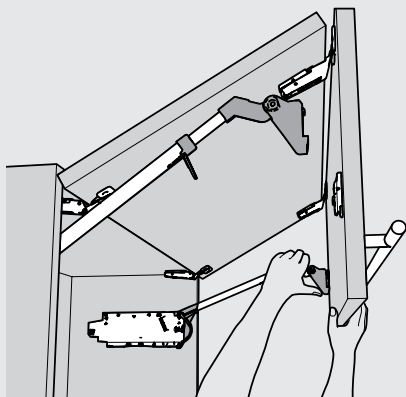
9 Attach the top door



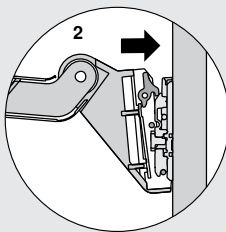
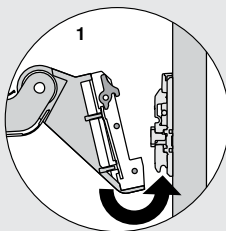
Determine the locations of mounting plates and hinges and attach the hardware to cabinet doors. Attach top door to the cabinet.



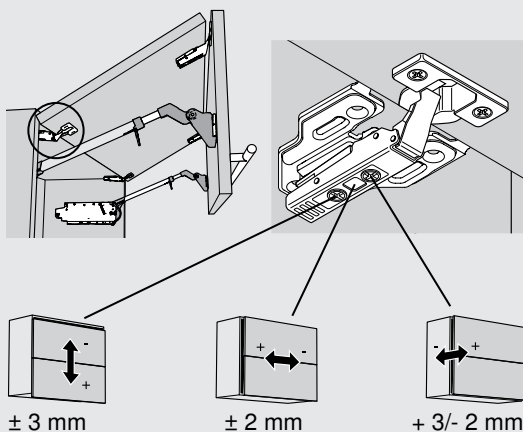
10 Attach the bottom door



Attach bottom door to the top door and attach the telescopic arms.

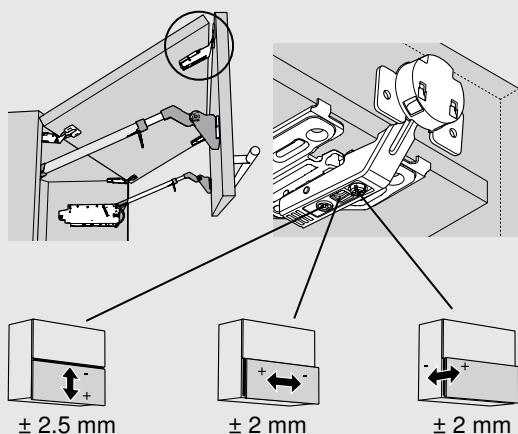


11 Adjust the top door hinge



Adjust each top door hinge and mounting plate to properly align the top door to the cabinet.

12 Adjust the bottom door hinge

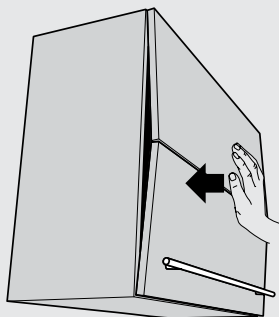


Adjust each bottom door hinge and mounting plate to properly align doors to the cabinet and to the top door.

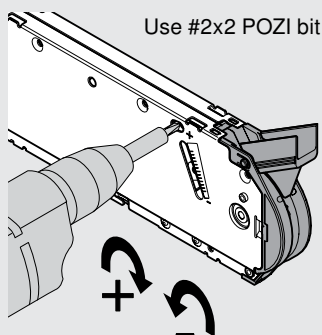
Assembly

13 Finalize the tension adjustments

1



2

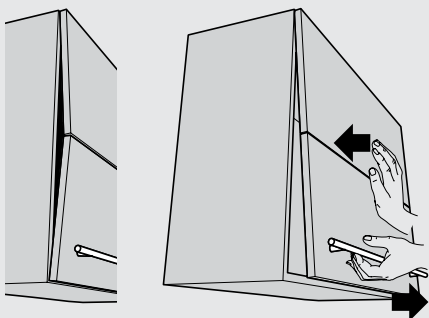


Close and flush doors to cabinet. Open and close door to test closing force. Open door and adjust tension screws on both lift mechanisms with a power drill. Test door again and repeat until desired function is achieved.

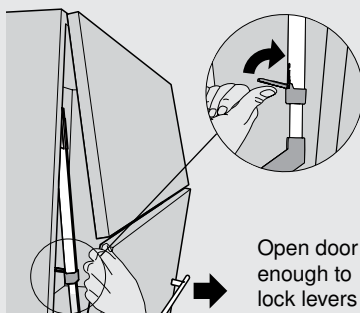
Tension adjustment should be the same on both lift mechanisms.

12 Lock telescopic arms

1



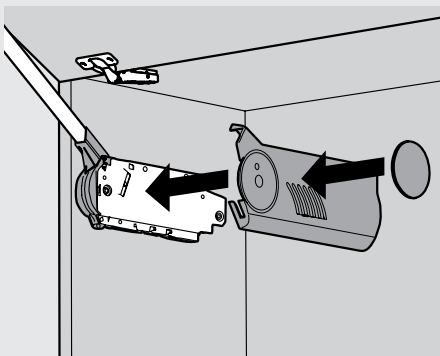
2



1. Close and flush doors to cabinet. While pressing on the bottom of the top door, pull the bottom door open one inch.

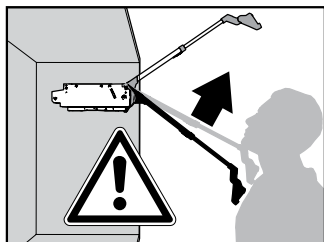
2. Slightly open door and lock the telescopic arms into position using the levers as shown.

15 Attach cover caps



Attach the left and right cover plates to each lift mechanism then attach the symmetrical cover caps.

Removal

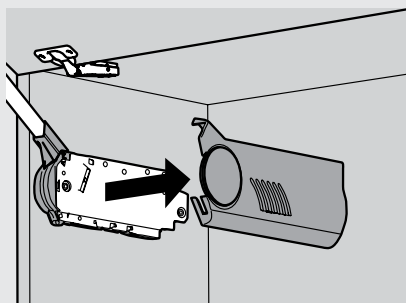


WARNING

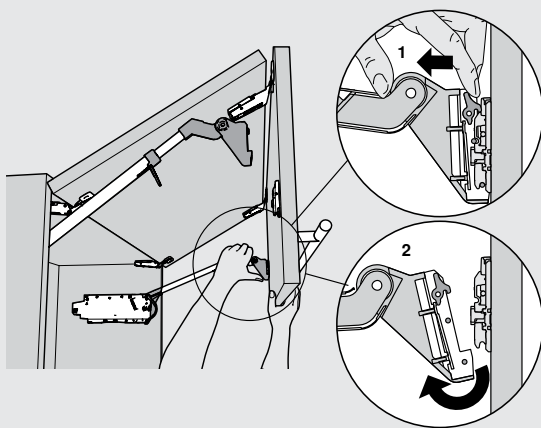
Risk of injury from spring-loaded arm

- Do not push lever arm down or leave in the down position
- Remove mechanism before installing or removing cabinet

1 Removing the covers

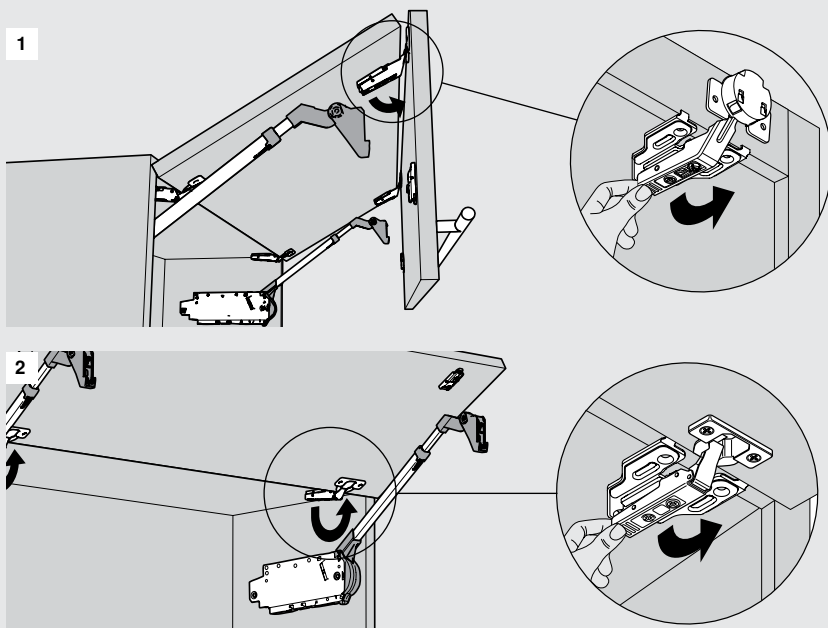


2 Removing the door



Release both arms and gently rest the top door on the loose arms. The tension will hold the doors up for the next step.

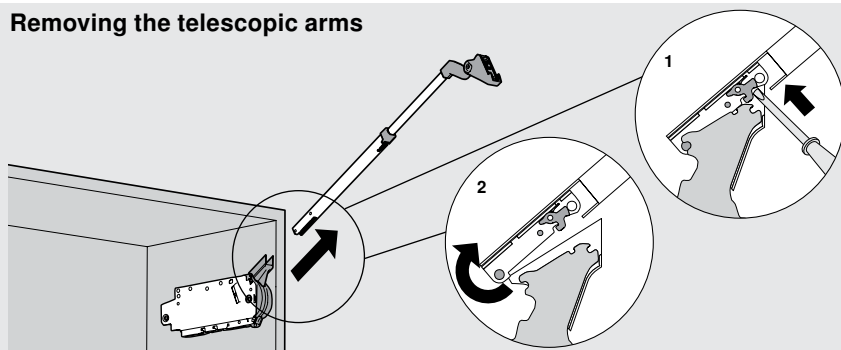
3 Removing the doors



1. Hold the bottom door while unclipping the bottom hinge.

2. Hold the top door while detaching the top hinges. Simply unclip them if using the CLIP top hinges or unscrew them if using COMPACT.

4 Removing the telescopic arms

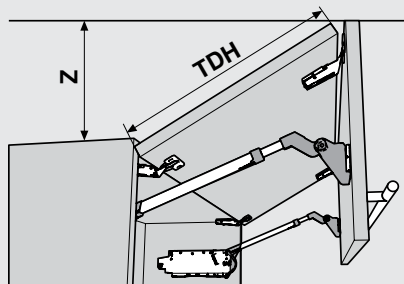


Using a screwdriver, depress the release tabs to remove telescopic arms.

If transporting the cabinet to the jobsite, stop here. Lift mechanisms can stay inside the cabinet for easy transport.

Other information

Door clearance above cabinet



$$Z = TDH \times .44 + 23$$

Inch		mm
1/32	.031	1
1/16	.063	1.5
3/32	.094	2
1/8	.125	3
5/32	.156	4
3/16	.188	5
7/32	.219	5.5
1/4	.25	6
9/32	.281	7
5/16	.313	8
11/32	.344	9
3/8	.375	9.5
13/32	.406	10
7/16	.438	11
15/32	.469	12
1/2	.5	13
17/32	.531	13.5
9/16	.563	14
19/32	.594	15
5/8	.625	16
21/32	.656	17
11/16	.688	17.5
23/32	.719	18
3/4	.75	19
25/32	.781	20
13/16	.813	20.5
27/32	.844	21
7/8	.875	22
29/32	.906	23
15/16	.938	24
31/32	.969	24.5
1	1	25.4

Blum, Inc.
 7733 Old Plank Rd.
 Stanley, NC 28164
 toll free 800-438-6788
 local 704-827-1345
 fax 704-827-0799
 internet www.blum.com
www.dynamicspace.us

